

The
Woolaroc

RETROSPECTIVE EXHIBIT & SALE

OCTOBER 19, 2019

ARTWORK FOR SALE

FEATURING THE ART OF

TONY ANGELL • CLYDE ASPEVIG
LOGAN MAXWELL HAGEGE • QUANG HO
TONY HOCHSTETLER • JEREMY LIPKING
THOMAS QUINN • SKIP WHITCOMB

✦ WOOLAROC ✦
MUSEUM & WILDLIFE PRESERVE

woolaroc.org | *Bartlesville, OK*

Purchase Artwork

Paying for Your Artwork

Please contact Jan Tucker at jtucker@frankphillips.org or 918.336.0307 ext. 11 if interested in purchasing any available pieces.

Checks are to be made payable to the Frank Phillips Foundation, Inc. Visa, MasterCard, American Express, and Discover cards also are accepted. However, buyers choosing to pay by credit card will incur a fee on their total invoice of three percent (3%). State and local sales tax will be added to the purchase price, when applicable. Any tax exemption will be verified.

Note: All art will remain on display until the close of the exhibition December 31, 2019, by which time each purchaser must have completed shipping arrangements. Items will be shipped to the buyer according to the agreed upon arrangements. Buyers of sale pieces are responsible for shipping or picking up their purchased piece.

WOOLAROC MUSEUM AND WILDLIFE PRESERVE

SHIPPING WAIVER AND RELEASE FORM

Only applicable to artwork shipped from Woolaroc

Due to the fragile nature of your artwork and to ensure its safe arrival at a destination selected by you, the Woolaroc Museum and Wildlife Preserve (Woolaroc) recommends that you arrange delivery of your artwork by a fine art shipping company that specializes in such shipments. Although commercial shipping companies do their best to ensure that a well-packed crate containing artwork will arrive in good condition, there have been a number of instances, when even the best crate was not able to protect the artwork. A staff member of Woolaroc will contact you to assist with arrangements for the shipment of your artwork.

Woolaroc assumes no liability for any damages incurred with respect to the shipment of your artwork, and, accordingly, we strongly recommend that you insure your artwork prior to shipment.

By signing this Shipping Waiver and Release Form, you hereby release Woolaroc from any liability, claims or demands for damages, losses, costs, or expenses arising from, and during, the shipment of your artwork.

AGREED AS TO THE ABOVE

Name

Date

Signature

Tony Angell

Angell's sculptural works have been acquired and placed in both private and museum collections nationally and internationally, among them the Seattle Art Museum and the Gilcrease Museum in Tulsa, OK. He is an award-winning artist and has written and illustrated 13 books related to natural history.



SOLD

A Presence, bronze on basalt base
One of a kind
16 x 8 x 9 in \$6,000



SOLD

At Rest, bronze on basalt base
One of a kind
7 x 12.5 x 8.75 in \$5,800



In Display, bronze on granite
One of a kind
10.5 x 10 x 14 in \$6,200



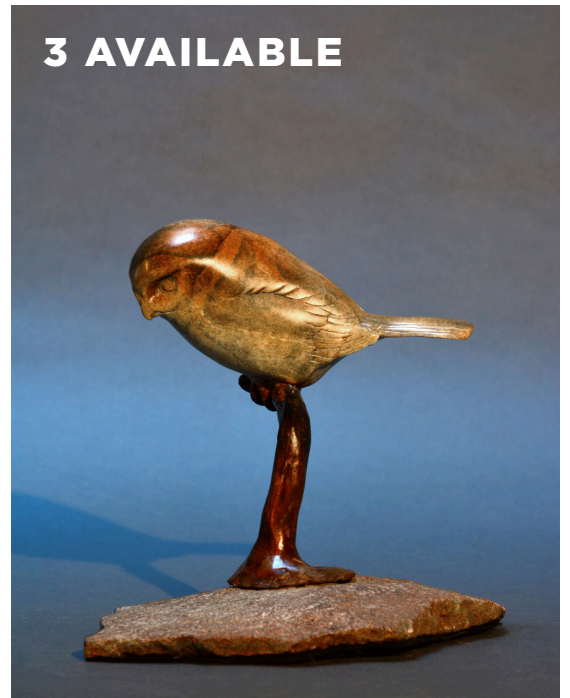
5 AVAILABLE

Inquisitive Owl, bronze on basalt base
9.75 x 6 x 7.5 in \$3,800

Tony Angell



Night Vigil, bronze on basalt base
6.5 x 9 x 12 in \$3,800



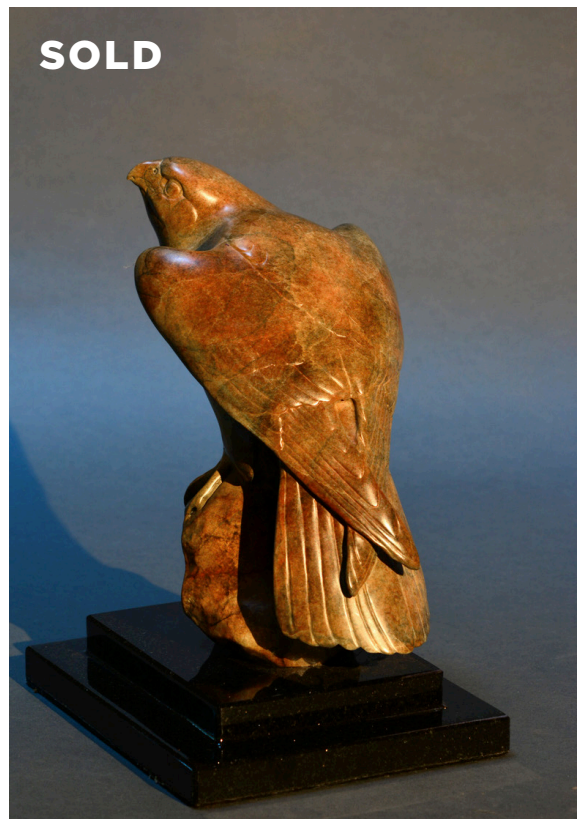
3 AVAILABLE

On the Hunt, bronze on basalt base
7 x 7 x 7 in \$2,200



SOLD

On Watch, bronze on basalt base
One of a kind
13.5 x 8 x 12 in \$6,000

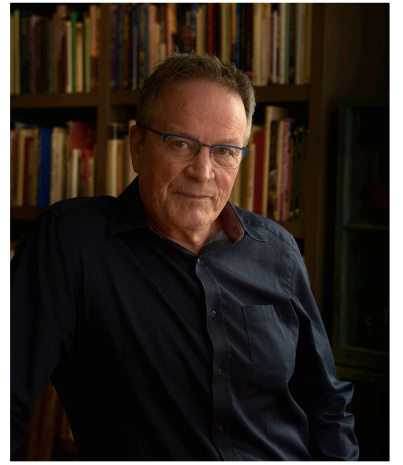


SOLD

Sky Search, bronze on granite
One of a kind
12 x 8.5 x 7 in \$5,400

Clyde Aspevig

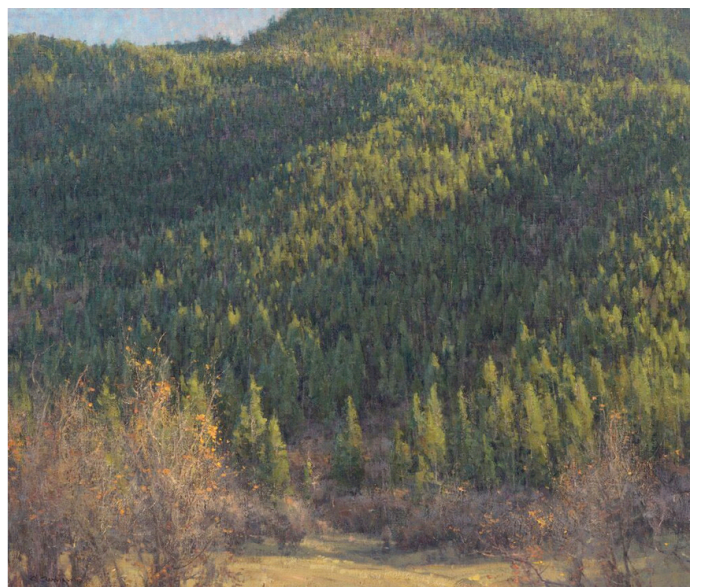
Known for his loose, realistic depictions of the vast, open landscapes of Wyoming and Montana, Aspevig's works are highly sought after by world-class collectors. His numerous awards include the Masters of the American West Purchase Award, Artists' Choice Award, and John J. Geraghty Award at the Autry Museum's *Masters* and the Prix de West Purchase Award at the National Cowboy & Western Heritage Museum's *Prix de West*.



Mt. Henkel, oil on linen,
36 x 40 in \$42,000



Pony, Montana, oil on linen,
30 x 40 in \$35,000



Conifer Hillside, oil on linen,
36 x 42 in \$43,000

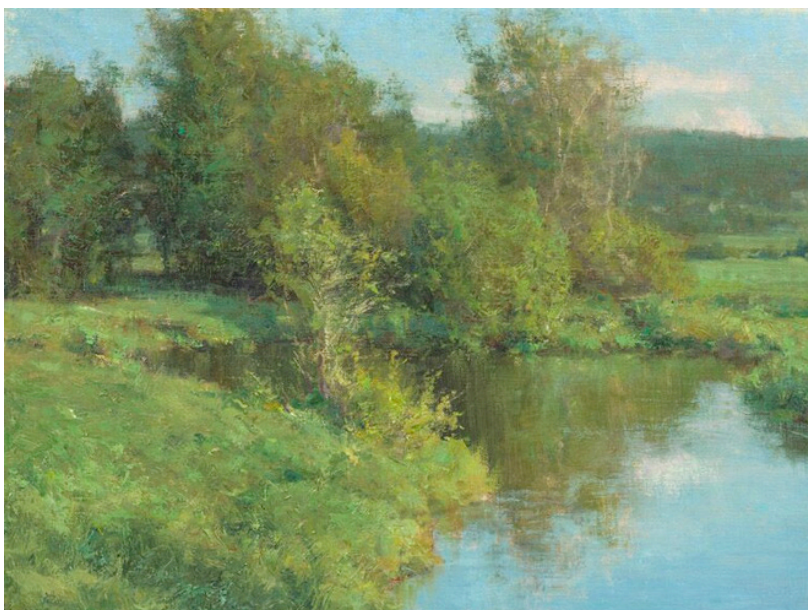
Clyde Aspevig



Big Creek Montana, oil on linen,
16 x 20 in \$10,500
SOLD



The Arid West, oil on linen,
36 x 42 in \$43,000



Willow Pond, oil on linen,
18 x 24 in \$14,000



Laguna Surf, oil on linen,
16 x 20 in \$12,000

Logan Maxwell Hagege

Hagege is known for his combination of techniques, focusing on contemporary Native Americans living in the Southwest, modern landscapes, bucking broncs, and other American relics. His work is featured in numerous museum collections, and his recent awards include the Patrons' Choice, Gene Autry Memorial, Thomas Moran Memorial, and Spirit of the West awards at the Autry Museum's *Masters* in L.A.



The Same Trail, oil on linen,
16 x 20 in **SOLD** \$11,500



A Marbled Canyon, oil on linen,
16 x 26 in **SOLD** \$14,000

Logan Maxwell Hagege



The Unknown, oil on linen,
16 x 12 in \$7,500

SOLD



A Friend of the West, oil on linen,
9 x 12 in \$4,500

SOLD



Dancing Light, oil on linen,
16 x 16 in \$11,000

SOLD

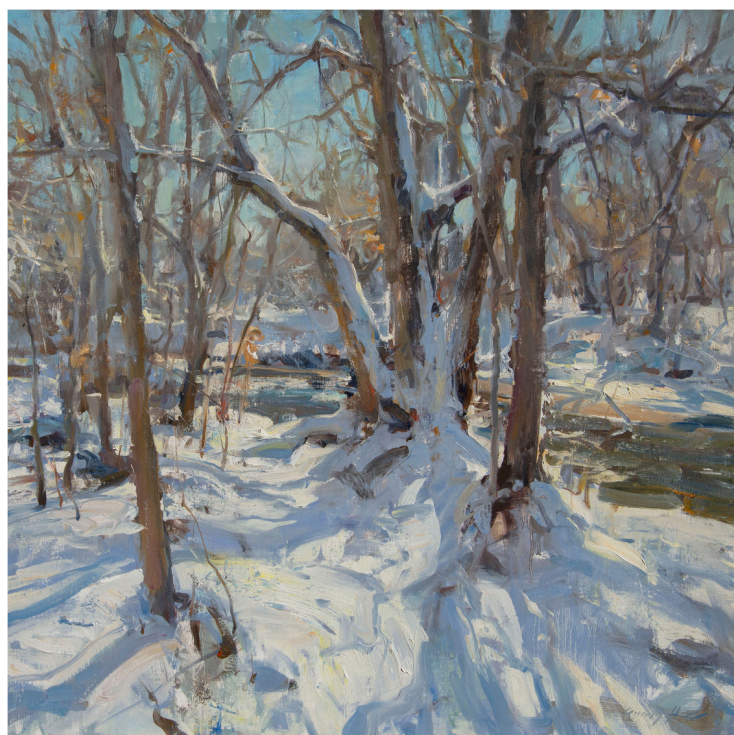
Quang Ho

Working mostly in oils, and occasionally watercolors and pastels, Ho's subject matter ranges from still lifes, landscapes, interiors, and dancers to figurative. He is a much sought after teacher for workshops and lectures internationally. He has won the top prize for the National Oil Painter of America's Masters category several times, as well as being awarded the 2018 Member's Choice and People's Choice awards.



The Farm Hand, oil on linen, 38 x 24 in \$18,500

SOLD



After the Storm, oil on linen, 30 x 30 in \$18,000

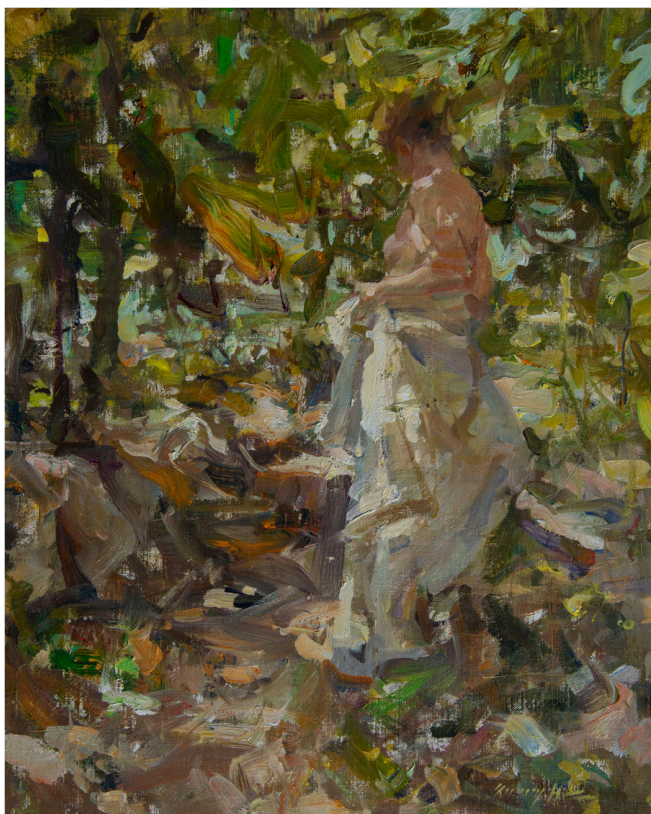


Heavy Laden, oil on linen, 48 x 60 in \$40,000

Quang Ho



By Autumn Stream, oil on linen, 17 x 12 in \$5,400



Forest Light, oil on linen, 17 x 12 in \$5,400



The Scarlet Paisley Shawl, oil on linen,
32 x 36 in \$17,500

SOLD



Behind the Scene at Luca, oil on panel,
20 x 20 in \$8,700

SOLD

Tony Hochstetler

Hochstetler is a sculptor of animals, more particularly a sculptor of reptiles, amphibians, insects, birds, and marine life. He is a member of, and has won various awards from the Society of Animal Artists and the National Sculpture Society. Most recently, his work has been exhibited at the Gilcrease Museum, the National Museum of Wildlife Art, and with the National Sculpture Society.



Stacked Frogs, bronze on burled walnut and black granite base, 40 x 25 x 16 in \$28,500



2 AVAILABLE

Beetle Vase, bronze, 15 x 6 x 6 in \$2,400



Ginkgo Leaves, bronze, 14 x 18 x 9 in \$4,500

Tony Hochstetler



2 AVAILABLE

Hanging Fruit Bat, bronze,
27 x 12 x 7 in \$6,000



Nautilus, bronze,
26 x 18 x 10.5 in \$8,100



Leafy Sea Dragon, bronze,
23 x 14 x 9.5 in \$6,000

Tony Hochstetler



Tree Frogs on Cottonwood, bronze with black granite pedestal,
56 x 25 x 42 in \$24,000



Stacked Turtles, bronze, 12 x 7 x 7 in \$4,500



Bean Pods, bronze, 25 x 17 x 7 in \$6,900

Jeremy Lipking

In a remarkably short period of time, Lipking has emerged as one of the country's premier realist artists. He creates art that is distinguished by a contemporary aesthetic and modern subject matter. His accomplishments are numerous, and he has been featured in publications such as *Fine Art Connoisseur* and *Art of the West*. He was named in 2013 one of the 75 greatest artists of all time by *American Artist* magazine.



Gathering, oil on linen,
36 x 18 in \$38,900



Protector, oil on linen,
24 x 18 in \$27,000

Jeremy Lipking



Sierra Sagebrush, oil on linen,
12 x 16 in \$12,500 **SOLD**



Evening Light, oil on linen,
10 x 8 in \$7,500



Brittany, oil on linen,
10 x 8 in \$7,500

Thomas Quinn

Quinn's paintings have been shown in numerous exhibitions, including shows held at the Field Museum in Chicago, the California Academy of Sciences in San Francisco, and the New York Museum of Natural History. Quinn has also been a regular participant and Gold Medal winner for watercolor at the *Prix de West* at the National Cowboy & Western Heritage Museum in Oklahoma City.



Source of the River, watercolor, 29.5 x 37 in \$22,000



Sepia Afternoon, watercolor, 26 x 33 in \$8,300

Thomas Quinn



Appearance of Cougars, watercolor, 30.25 x 39.5 in \$14,500



Sleeping Sea Otter, watercolor, 36.25 x 27.375 in \$13,500

Thomas Quinn



A Stirring of Stars, watercolor, 32 x 38 in \$26,000

Skip Whitcomb

An internationally acclaimed, award-winning artist, Whitcomb has been profiled in numerous publications. His work has been featured all over the world, and his many awards include the Artists' Choice Award at the *Coors Western Art Exhibit & Sale* and the Donald Teague Memorial Award for Best Work on Paper at the *Prix de West*. His work is also featured in many public and private collections.



Converging Shadows - Lee's Ferry, pastel on archival paper,
24 x 31 in \$15,000



Upper Pasture Nocturne, oil on linen mounted on panel,
16 x 24 in \$8,700

Skip Whitcomb



August Moon and Katydid Music, pastel on archival paper,
18 x 22 in \$8,900

SOLD



Mowing Crew, pastel on archival paper,
18 x 20 in \$7,200



Bill's Pond, oil on linen mounted on birch panel,
8 x 10 in \$2,500

SOLD