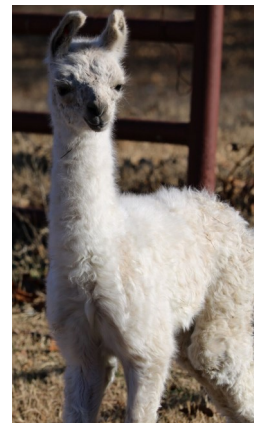
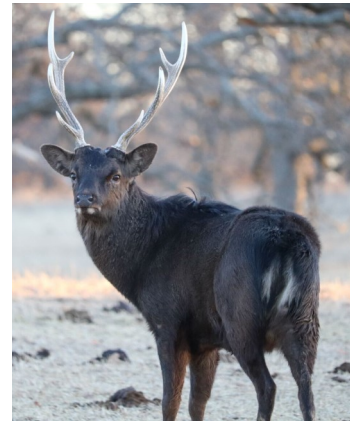


# WOOLAROC

MUSEUM & WILDLIFE PRESERVE

## WHAT RANCH ANIMAL IS THAT??

Parents/Educators: Cut out the images of Woolaroc Ranch animals on this page. Use information on the “Ranch Animal Facts” page to lead a discussion about each animal. Talk about what each animal looks like (Does it have fur or not? What color is it? How many legs does it have?). Have children sort the animals based on similar characteristics.



# **RANCH ANIMAL FACTS**



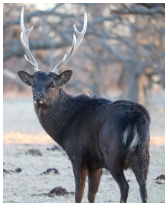
## **Aoudad**

- A type of mountain goat
- Like to eat grass, leaves, and shrubs
- Reddish-brown color to blend in with mountains and sandy rocks



## **Texas Longhorn**

- A type of cattle that comes in many colors and varieties
- Horns can extend over 8 feet, tip to tip
- Like to eat grasses and hay



## **Japanese Sika Deer**

- Can be dark or spotted in color
- Imported from Japan
- Males have large, tall antlers



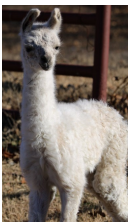
## **Nubian Goat**

- Distinctive long ears
- Much larger than other goat breeds
- Often used as milking goats



## **Beefalo**

- Cross between a bison (buffalo) and a steer
- Larger than steer and some bison
- Often dark brown in color



## **Llama**

- Come in a variety of colors
- Most have long hair
- Can grow up to 6 feet tall



## **Zebra**

- Each zebra has different white and black stripes
- Originally from Africa
- Mostly eat grasses



## **Water Buffalo**

- A type of wild cattle
- Eats aquatic plants as well as grasses and leaves
- Like to swim in water to avoid the heat



## **American Bison**

- North America's largest land mammal (can weigh up to 2,000 pounds)
- Baby bison are orange-red; They grow dark brown hair as they get older
- Roll in dirt to get rid of bugs and help shed fur